



ATENEIO DE MANILA UNIVERSITY

OFFICE OF THE PRESIDENT

Memo # U2324-097

4 March 2024

TO The University Community

SUBJECT North Carpark Upgrade and the Creation of the Campus Mobility Forum

We are grateful for the valuable feedback we received both before and during the forum on the North Carpark Upgrade Project held on 31st January 2024 in Escaler Hall. After listening to the various opinions and suggestions and having considered these perspectives together with the concerns of other stakeholders, the University administration has arrived at the following decisions:

1. We shall proceed with the North Carpark Upgrade Project in order to enhance safety and improve drainage in the area. There will be modifications to the original plan so that no native trees will be cut down. The University shall adjust the design of the carpark to save trees. The project shall start on 11 March 2024. Please see attached revised carpark design for reference.
2. We shall carry on with the plan to remove the mahogany and gmelina trees following the University's Sustainability Policies and Specific Guidelines which have served as our guide since their approval in 2016. A copy of these policies may be downloaded from <https://www.ateneo.edu/ais/resources>. Kindly refer to page 5 of the Sustainability Policies for the relevant section on avoiding the planting of mahogany trees in pedestrian areas and parking lots. The University's sustainability policy on biodiversity is supported by one of the actions identified in the [Laudato Si' Action Platform](#) set by the [Dicastery for the Promotion of Integral Human Development](#) of the Vatican: "*Protecting biodiversity by planting native trees, planting native gardens, removing invasive species, practicing regenerative agriculture, and protecting pollinators*¹."

Apart from providing seedlings to DENR as required by law for each tree to be removed in the parking area, the University will replace the mahogany and gmelina trees by planting native trees in the non-buildable areas of the campus.

3. We have created the "Campus Mobility Forum," a group that will help the University administration in developing innovative solutions and sustainable campus mobility strategies.

The Campus Mobility Forum functions as a medium for members of the University community to come together to express ideas freely, arrive at consensus discursively, and help decision makers develop a program of action.

The forum conveners will conduct small group discussions across the Basic Education, Higher Education schools, and affiliate units in the Loyola Heights campus. The participants will include a variety of sectors, among whom are students, faculty members, staff, parents, school bus/tricycle/private car drivers, alumni, administrators, Jesuits, as well as bikers, green

¹ <https://laudatosi-actionplatform.org/app/uploads/2021/05/overview-of-laudato-si-goals-and-actions-1.pdf>

spaces advocates, car users, pedestrians, public transport users, dormers, and individuals with accessibility needs.

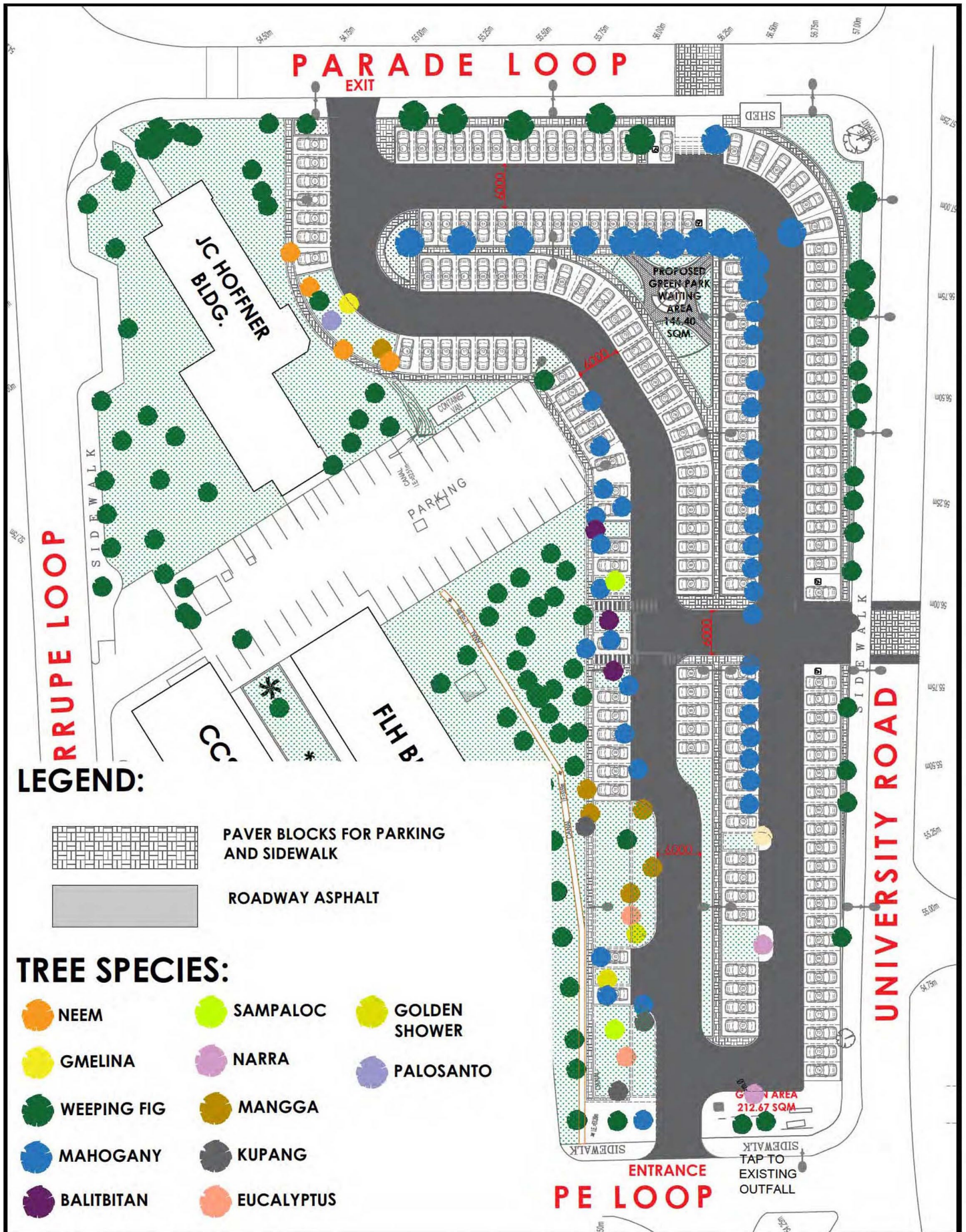
The forum conveners will document ideas exchanged and prepare a report outlining a vision for mobility on campus between now and 2030. The Forum will consider, among others, policies and practices that will promote innovative strategies that will improve campus mobility consistent with long-term sustainability.

I have requested Dr Czarina Saloma-Akpedonu, Dean of the School of Social Sciences, to chair the Campus Mobility Forum. A subsequent memo (U2324-098) will be issued shortly to appoint its conveners.

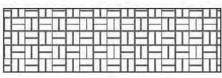
With a shared hope in finding the best solutions to our campus mobility challenges, let us move forward with patience and trust as we continue to care for the well-being of our community and our shared environment.

(Sgd) Roberto C Yap SJ
President

LS North Open Carpark Upgrade Project



LEGEND:



PAVER BLOCKS FOR PARKING AND SIDEWALK



ROADWAY ASPHALT

TREE SPECIES:

- | | | | | | |
|--|-------------|--|----------|--|---------------|
| | NEEM | | SAMPALOC | | GOLDEN SHOWER |
| | GMELINA | | NARRA | | PALOSANTO |
| | WEeping FIG | | MANGGA | | MAHOGANY |
| | BALITBITAN | | KUPANG | | EUCALYPTUS |

ENTRANCE
PE LOOP